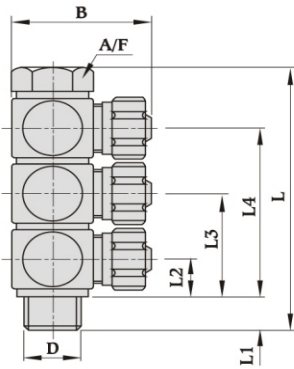


Distribution Hollow Bolts (DHB)

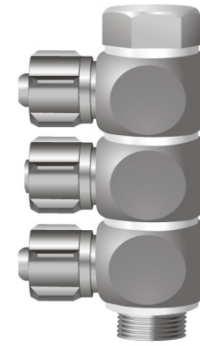


Basic Dimensions



Scope of supply :

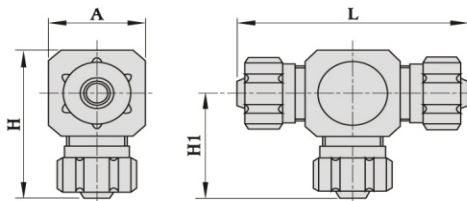
- Eye bolt
(Aluminum blue anodised)
- Stud (M.S. Zinc plated)
- Sealing ring



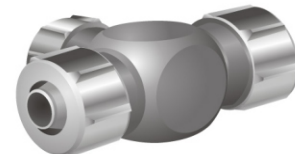
Order code No. and type	Connection (D)	B mm	L mm	L1 mm	L2 mm	L3 mm	L4 mm	A/F
DHB 1/8" - 2 - PU3	1/8" BSP	26.0	40.0	6.5	6.2	16.5	--	14 mm
DHB 1/8" - 2 - PU4	1/8" BSP	29.0	46.5	6.5	7.5	26.0	--	14 "
DHB 1/8" - 3 - PU4	1/8" BSP	29.0	64.5	6.5	7.5	26.0	44.5	14 "
DHB 1/8" - 4 - PU4	1/8" BSP	43.0	46.5	6.5	7.5	26.0	--	14 "
DHB 1/8" - 2 - PU6	1/8" BSP	29.0	50.0	6.5	8.5	25.0	--	14 "
DHB 1/8" - 3 - PU6	1/8" BSP	29.0	61.0	6.5	8.5	25.0	41.0	14 "
DHB 1/8" - 4 - PU6	1/8" BSP	43.0	50.0	6.5	8.5	25.0	--	14 "
DHB 1/4" - 2 - PU3	1/4" BSP	29.0	40.0	6.5	10.0	26.0	--	17 "
DHB 1/4" - 2 - PU4	1/4" BSP	32.5	46.5	6.5	8.5	26.0	--	17 "
DHB 1/4" - 3 - PU4	1/4" BSP	32.5	64.5	6.5	8.5	26.0	44.5	17 "
DHB 1/4" - 4 - PU4	1/4" BSP	46.0	46.5	6.5	8.5	26.0	--	17 "
DHB 1/4" - 2 - PU6	1/4" BSP	32.5	50.0	6.5	10.0	26.0	--	17 "
DHB 1/4" - 3 - PU6	1/4" BSP	32.5	70.0	6.5	10.0	26.0	43.0	17 "
DHB 1/4" - 4 - PU6	1/4" BSP	46.0	50.0	8.0	10.0	26.0	--	17 "
DHB 3/8" - 2 - PU6	3/8" BSP	38.5	50.0	8.0	10.0	26.0	--	25 "
DHB 3/8" - 3 - PU6	3/8" BSP	38.5	70.0	8.0	10.0	26.0	43.0	25 "
DHB 3/8" - 4 - PU6	3/8" BSP	52.0	50.0	8.0	10.0	26.0	--	25 "
DHB 3/8" - 2 - PU8&9	3/8" BSP	43.7	66.0	8.0	13.0	37.0	--	25 "
DHB 3/8" - 3 - PU8&9	3/8" BSP	43.7	89.5	8.0	13.0	37.0	61.0	25 "
DHB 3/4" - 4 - PU 8&9	3/8" BSP	62.4	66.0	8.0	13.0	37.0	--	25 "

Equal Tee (ET)

Basic Dimensions



Material : Aluminium
Finish : Blue anodised



Order code No. and type	Tube ID in mm	Nominal Bore in mm	Dimensions			
			H mm	H1 mm	L mm	A mm
ET - 3 - PU - 3	3	2.4	26.0	18.0	36.0	16
ET - 3 - PU - 4	4	3.4	29.5	21.5	43.0	16
ET - 3 - PU - 6	6	5.3	29.5	21.5	43.0	16
ET - 3 - PU - 8	8	7.0	37.5	28.0	56.5	19

Technical changes reserved

