



"aira" offers "Stainless Steel Triclover Ends" attached in all the stainless steel valves for Hygienic applications like, Pharmaceuticals (Drugs), Food Process Industries, Dairy Plants, Beverages, Biotech, Personal Care and Cosmetic Industries.

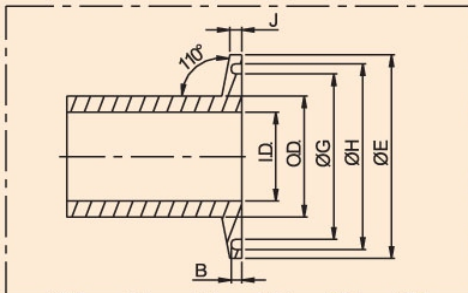
**Silent Features :**

- Guaranteed Surface finish • Electro-polishing in valve and the T.C. ends
- Dimensional Accuracy • No gaps in joints • Easy to disassemble.

"Airmax" has inhouse facilities for electro-finishing to the valves and T.C. ends Electro-polishing Treatment, which...

- Improve sanitising results and reduces down time. • Maximise passivation and improves corrosion resistance. • Redduces friction coefficient. • Offers longer shelf life.

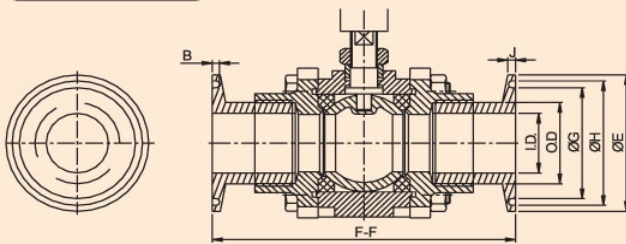
**TC END CONNECTOR**



**Dimensions :** (All dimensions are in MM)

Valve Size		↖E	↖G	↖H	I.D.	O.D.	J	B
MM	Inch							
15	1/2"	34	25.5	29.5	12.5	18.5	2.8	1.5
20	3/4"	34	25.5	29.5	17	23	2.8	1.5
25	1"	50.5	42	46	24	31	2.8	1.5
40	1.1/2"	50.5	42	46	32	41	2.8	1.5
50	2"	64	55.5	59.5	42.5	52.5	2.8	1.5
65	2.1/2"	77.4	68.6	72.6	60.3	70	2.8	1.5
80	3"	90.9	81.3	85.3	73	83	2.8	1.5

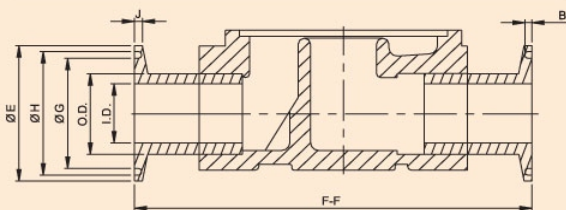
**BALL VALVE**



**Dimensions :** (All Dimensions are in mm)

Valve Size		↖E	↖G	↖H	I.D.	O.D.	J	F-F	B
MM	Inch								
15	1/2"	34	25.5	29.5	12.5	18.5	2.8	81	1.5
20	3/4"	34	25.5	29.5	17	23	2.8	86.7	1.5
25	1"	50.5	42	46	24	31	2.8	88.5	1.5
40	1.1/2"	50.5	42	46	32	41	2.8	106.5	1.5
50	2"	64	55.5	59.5	42.5	52.5	2.8	134.6	1.5
65	2.1/2"	77.4	68.6	72.6	60.3	70	2.8	187	1.5
80	3"	90.9	81.3	85.5	73	83	2.8	187	1.5

**ISD / GSD / STEAM SOLENOID VALVE**



**Dimensions :** (All Dimensions are in mm)

Valve Size		↖E	↖G	↖H	I.D.	O.D.	J	F-F	B
MM	Inch								
15	1/2"	34	25.5	29.5	12.5	18.5	2.8	95	1.5
20	3/4"	34	25.5	29.5	17	23	2.8	110	1.5
25	1"	50.5	42	46	24	31	2.8	125	1.5
40	1.1/2"	50.5	42	46	32	41	2.8	150	1.5
50	2"	64	55.5	59.5	42.5	52.5	2.8	165	1.5